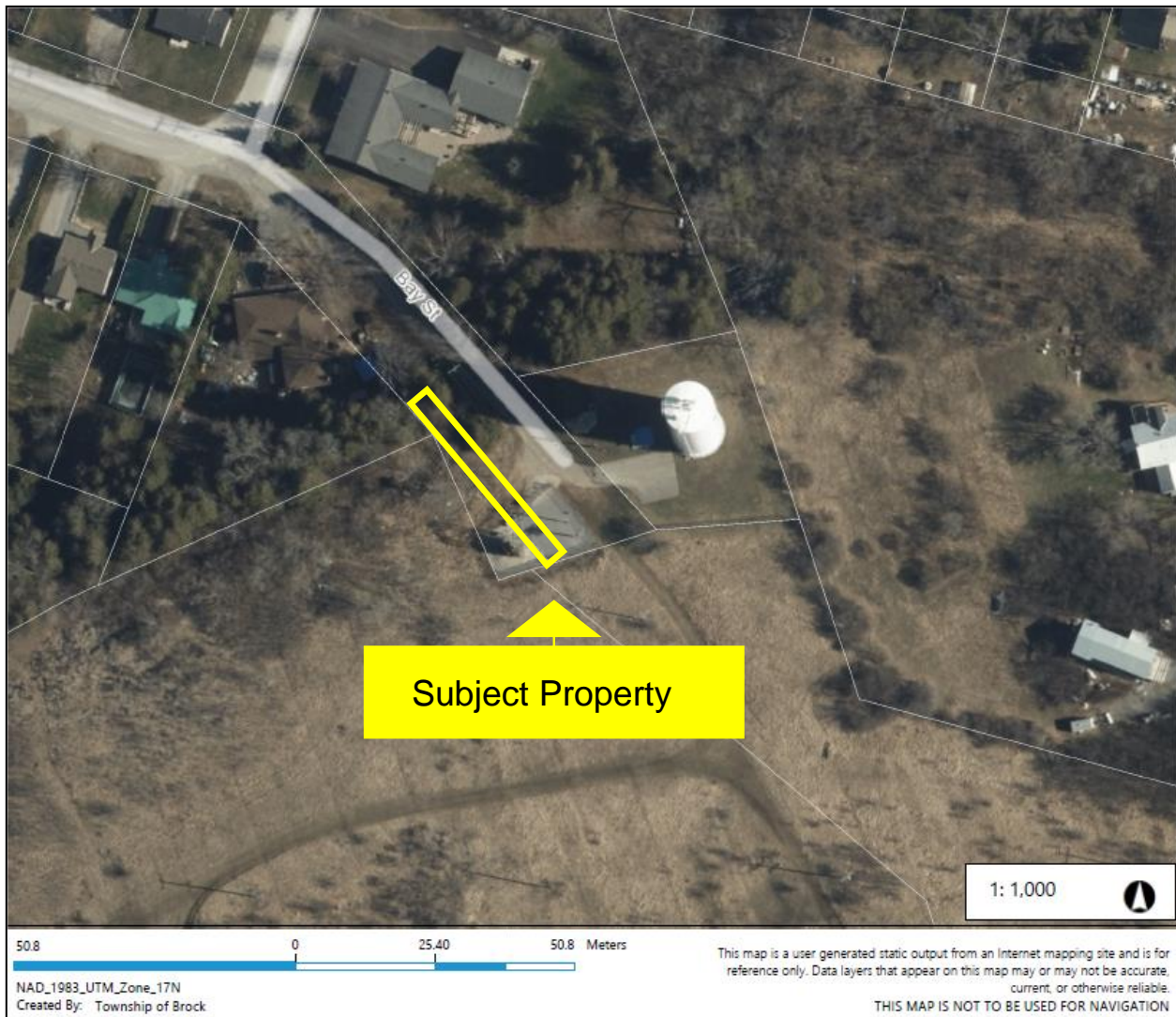


Key Map to Proposed Closure & Sale of An Unopened Road Allowance



Part of Bay Street Extension and Portions of vacant land, Bay Street, Beaverton known as Part of the Bay Street Extension and Portions of vacant land, Bay Street, East of York Street, Plan 39, Part north ½ Lot 14, Concession 5, Brock, as in BN3631, Except Part 1, 40R3978, Except Part 1, 40R3725