



MacLEOD PARK

CONCEPT PLAN | 2024







BACKGROUND

MacLeod Park is a 16-hectare community park located in Cannington, Ontario. Situated along the Beaver River and Trans Canada Trail, the park offers important social gathering space for the Township of Brock and is the community's focal point for cultural and recreational opportunities.

A MacLeod Park Plan was developed in 2014 by a Landscape Architecture student from the University of Guelph. The design plan featured many amenity improvements and presented an effective new vision for the park.

In December 2023, a 10-year Parks, Recreation & Culture Master Plan was adopted by Council. The Master Plan provides strategic guidance for decisions related to municipal parks and recreation facilities, highlighting the values and needs of the community. A key recommendation within the Parks, Recreation & Culture Master Plan was the development of a new site-specific master plan for MacLeod Park that reflects current community interests.

This Concept Plan serves to build upon the vision of the 2014 MacLeod Park Plan with respect to the recommendations and implementation strategies presented in the Parks, Recreation & Culture Master Plan. It is intended as a visioning document for discussion purposes only.



Baseball Diamonds revitalized;
second field repositioned for park
space maximization

New Pathways establish better
connections throughout the park

Beaver River Trail

Proposed Multi - Use
Playing Field

Seating Area

Canteen &
Washroom Facilities

Covered Seating

Proposed BMX /
Mountain Bike Skills Track

Existing
Skateboard Park

Proposed Splash Pad with
Covered Seating nearby

Existing Playground
with Covered Seating

Cannington Historical Society's
Centennial Museum

Tennis Courts relocated
and revitalized

Proposed Stage Area to
accommodate outdoor
performances and events

Updated Pedestrian Bridge
to establish better connection
between the parks

Accessible Playground

Expanded Parking for
Lawn Bowling Club and
MacLeod Park users

Ex. Parking

Curling Club

Community
Centre

Animal
Shelter

Ex. Parking

Lawn
Bowling
Club

Peace Street

Basketball Court relocated and
extended from a half to a full court

Proposed Washroom Facilities

Claire Hardy Park
Entry Signage

Royal Canadian
Legion

MacLeod Park
Entry Signage

Cameron Street East

McRae Street

Trootie Street

ANALYSIS

MacLEOD PARK PLAN GOALS & OBJECTIVES (2014)

The 2014 MacLeod Park Plan was developed based on the findings of the 2012 Recreation Master Plan. The design addresses the following goals and objectives:

Goals:

- To utilize the Recreational Master Plan recommendations for municipal parkland use to address the recreational needs of Cannington residents and guide future development of parkland in order to achieve a larger, more cohesive park experience that offers maximum benefit for the well-being of both individuals and the community.
- To create a site that has the capacity to provide recreational, leisure and entertainment opportunities for various age groups and ability levels within the community.

Objectives:

- Expand the Claire Hardy Park Trail System to form a continuous loop
- Build a covered seating shelter for skateboard park patrons in Claire Hardy Park
- Construct a BMX bike course adjacent to the skateboard park as a complementary amenity to that facility
- Install new accessible playground equipment with barrier-free features in MacLeod Park
- Construct a new splash-pad in Claire Hardy Park
- Rejuvenate the aging picnic pavilion in MacLeod Park
- Build a stage in MacLeod Park to accommodate outdoor entertainment
- Install consistently designed wayfinding signage throughout both parks

- Construct new washrooms in Claire Hardy Park
- Revitalization initiatives must accommodate existing park festivals and celebration

PARKS, RECREATION & CULTURE MASTER PLAN (2023)

The Parks, Recreation & Culture Master Plan is a framework for the Township of Brock to manage and sustain trails, open spaces, and parks as well as recreation and leisure programs, facilities, and amenities over a 10-year period to 2033. Highlights of the Master Plan's site-specific recommendations are as follows:

- After introducing 1 pickleball court in MacLeod Park on the existing skatepark pad, plan to provide additional courts in this park within the next three years. Anticipate providing one additional court by 2033, for which need will be verified through monitoring actual use of all courts.
- Implement budgeted tennis court improvements
- Continue to provide/add more washrooms and drinking water fountains to public parks
- Provide pedestrian-scale walkway lighting in a park in each community
- Decrease mowing in parks and create naturalized planting areas in suitable locations
- Promote accessibility and ensure new parks and trails meet Accessibility for Ontarians with Disabilities Act (AODA) standards
- Prioritization of the following improvements from the 2014 MacLeod Park Plan: winterized accessible washrooms, paved multi-use walking track, and tree planting

KEY UPDATES

The MacLeod Park Concept Plan retains the key foundational elements of the 2014 MacLeod Park Plan, including a commitment to cohesive and accessible design through the provision and revitalization of park amenities.

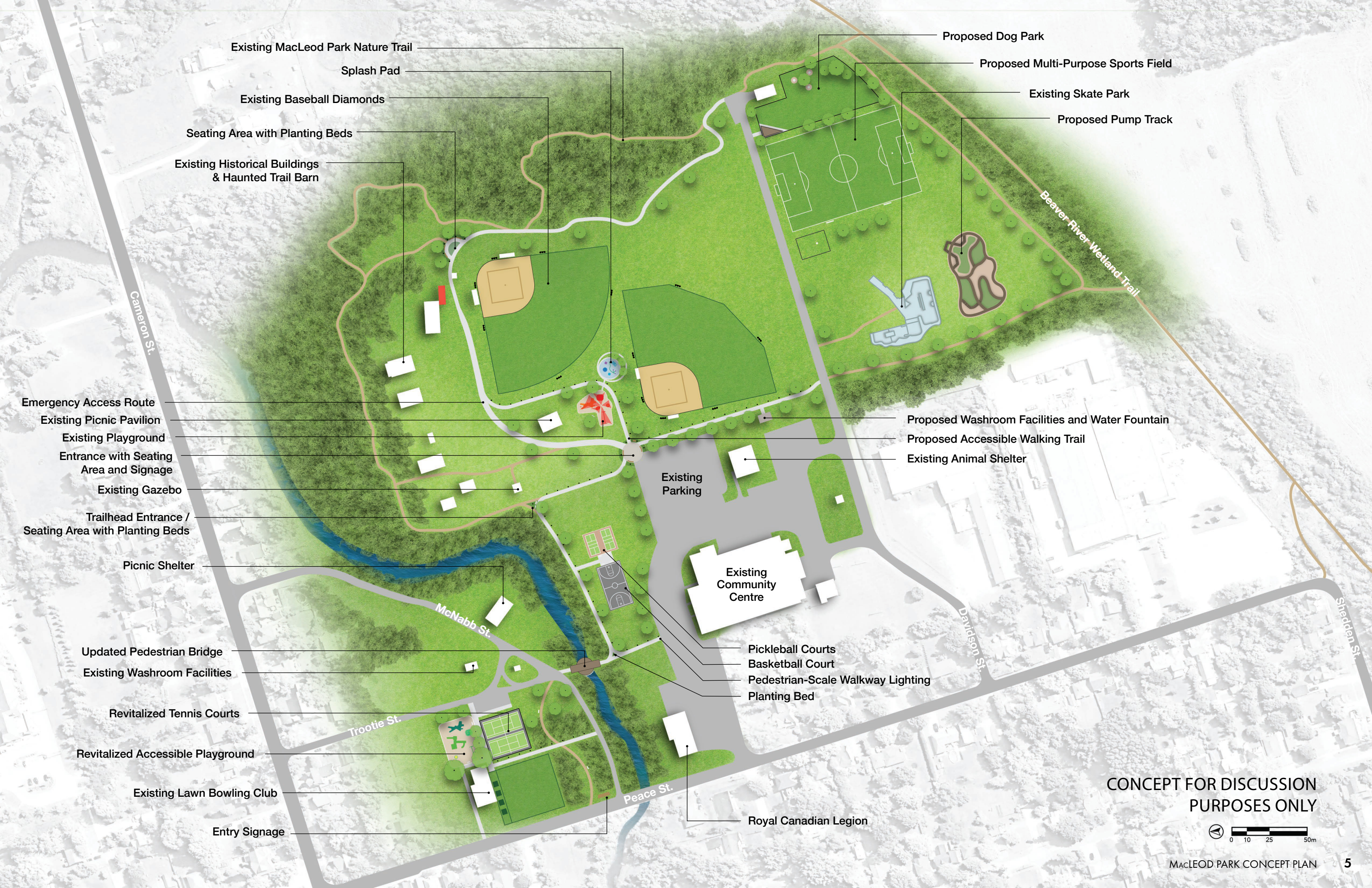
In addition to maintaining the overall vision and foundational elements established in the 2014 MacLeod Park Plan, the updated plan concepts retain much of the proposed amenities and facilities including an expanded multi-use trail, an accessible playground and splash-pad, and consistent signage at the gateways of the park.

As a result of the recommendations in the recent Parks, Recreation & Culture Master Plan, the key change to the plan is an updated layout of proposed amenities to better reflect current community interests. The conceptual layouts strive to create a discernible park gateway and subsequent 'hubs' of activity while maintaining open space for passive recreation. By expanding on ideas to reinforce cohesive place-making design, the updated concepts improve upon the original design of MacLeod Park.

CONCEPT 1

Concept 1 focuses on delivering essential recreational facilities while ensuring maximum accessibility for all visitors. By prioritizing the construction of multi-purpose sports courts, playgrounds, and seating areas, this design caters to a wide range of recreational activities within a cost-effective framework. The park will feature accessible pathways on both sides of the Beaver River to ensure safe and easy access for individuals of all abilities.

This design intends to revitalize many of the park's existing features such as the asphalt pads for basketball and pickleball, as well as the tennis courts. It balances functionality and inclusivity, creating a welcoming environment for the entire community to enjoy.



Existing MacLeod Park Nature Trail

Splash Pad

Existing Baseball Diamonds

Seating Area with Planting Beds

Existing Historical Buildings & Haunted Trail Barn

Proposed Dog Park

Proposed Multi-Purpose Sports Field

Existing Skate Park

Proposed Pump Track

Beaver River Wetland Trail

Cameron St.

Emergency Access Route

Existing Picnic Pavilion

Existing Playground

Entrance with Seating Area and Signage

Existing Gazebo

Trailhead Entrance / Seating Area with Planting Beds

Picnic Shelter

McNabb St.

Updated Pedestrian Bridge

Existing Washroom Facilities

Revitalized Tennis Courts

Revitalized Accessible Playground

Existing Lawn Bowling Club

Entry Signage

Existing Parking

Proposed Washroom Facilities and Water Fountain

Proposed Accessible Walking Trail

Existing Animal Shelter

Existing Community Centre

Davidson St.

Pickleball Courts

Basketball Court

Pedestrian-Scale Walkway Lighting

Planting Bed

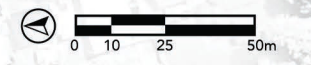
Trootie St.

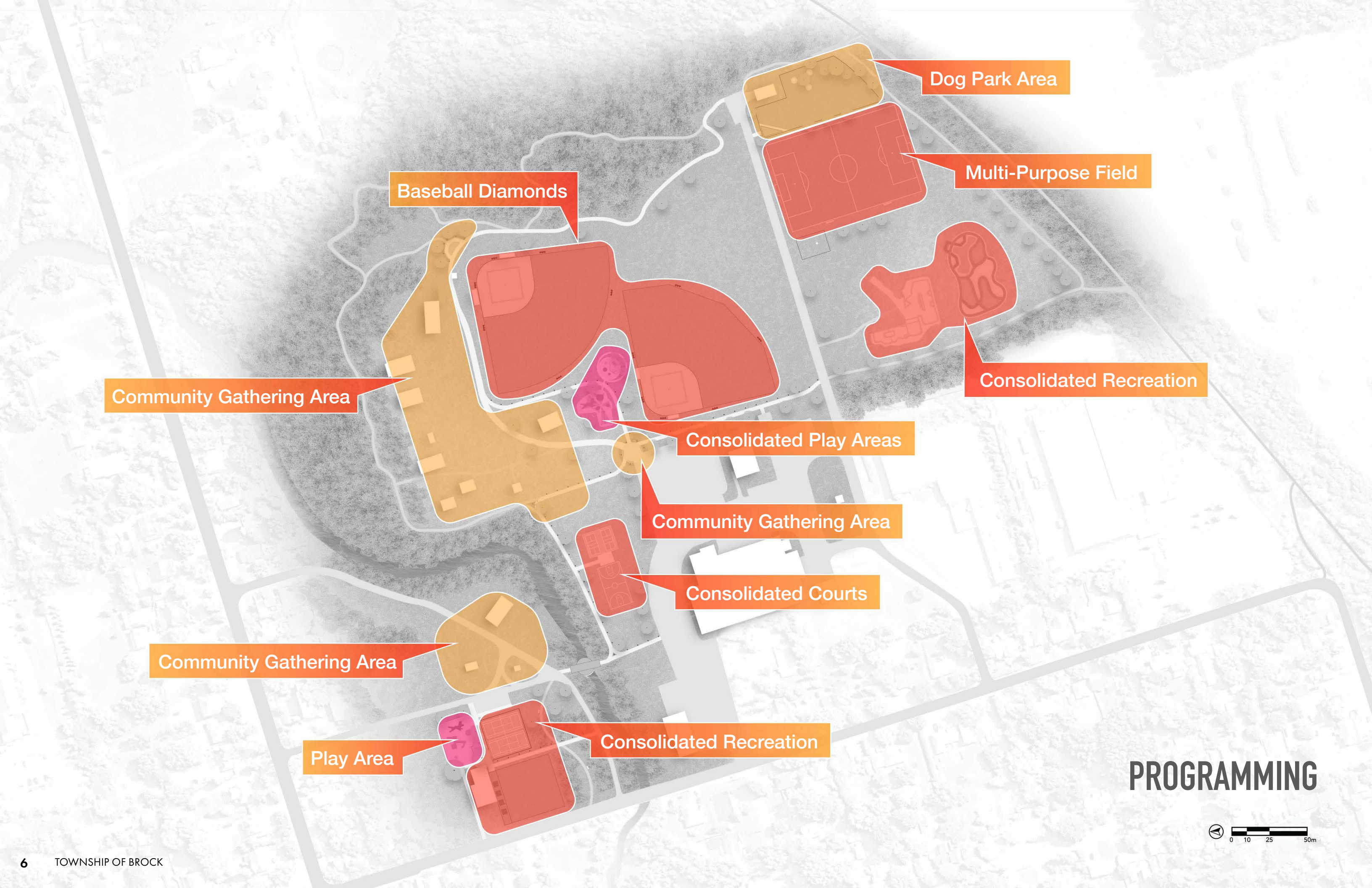
Peace St.

Royal Canadian Legion

Sheepen St.

CONCEPT FOR DISCUSSION PURPOSES ONLY





Dog Park Area

Multi-Purpose Field

Baseball Diamonds

Consolidated Recreation

Community Gathering Area

Consolidated Play Areas

Community Gathering Area

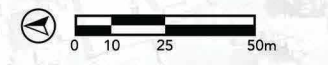
Consolidated Courts

Community Gathering Area

Consolidated Recreation

Play Area

PROGRAMMING





Walking Trail

Beaver River Wetland Trail

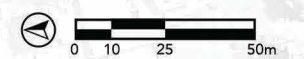
Accessible Walking Path

Emergency Vehicle Access

Maintenance Road

Parking

CIRCULATION





Gateway

Viewshed

Lighting

Park Signage

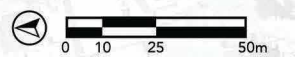
Formal Park Entrance

Gateway

Lighting

Park Signage

EXPERIENTIAL DESIGN





PHASE 1 | Year 0 to 4

- Accessible walking paths
- Walking trails
- North park improvements (accessible playground, walking paths, tennis courts, benches, parking, picnic shelter)
- Basketball court
- Pickleball courts
- Plazas (northeast plaza and central entrance plaza)
- Dog park
- Entrance signage at Peace Street and central plaza
- Pump track



PHASE 2 | Year 4 to 7

- Tree planting
- Plaza planting
- Updated pedestrian bridge
- Multi-purpose sports field
- Baseball diamond lighting
- Utility extension for future splash pad, washrooms and lighting



PHASE 3 | Year 7 to 10

- Pedestrian-scale lighting
- Splash pad
- Washroom facilities

PHASING PLAN

CONCEPT 2

Concept 2 is a cohesive hub-oriented park design that creates distinct zones for passive and active recreation. This concept presents an identifiable entrance that transitions to active recreational facilities.

Notably, this design proposes reduced parking and a repositioned ball diamond to prioritize central open green space for flexible use, passive recreation, and enhanced vistas. Within this central core of the park is an accessible sheltered picnic area, emphasizing a memorable entrance gateway that will serve as a social gathering space for events throughout the year.

Proposed active recreation areas include multi-purpose sports courts, a dog park, playgrounds, a splash pad, and a pump track, encouraging vigorous activity and community engagement for all ages.



Repositioned Baseball Diamond

Existing MacLeod Park Nature Trail

Splash Pad

Existing Baseball Diamonds

Proposed Accessible Walking Trail

Existing Historical Buildings & Haunted Trail Barn

Proposed Dog Park

Proposed Multi-Purpose Sports Field

Existing Skate Park

Proposed Pump Track

Beaver River Wetland Trail

Cameron St.

Emergency Access Route

Existing Playground

Existing Gazebo

Picnic Shelter

Updated Pedestrian Bridge

Existing Washroom Facilities

Revitalized Tennis and Pickleball Courts

Revitalized Accessible Playground

Existing Lawn Bowling Club

Entry Signage

Proposed Basketball Court

Proposed Picnic Pavilion

Proposed Washroom Facilities and Water Fountain

Existing Animal Shelter

Planting Bed and Entrance Signage

Reduced and Revitalized Parking Lot

McNabb St.

Existing Community Centre

Proposed Bandstand

Pedestrian-Scale Walkway Lighting

Trootie St.

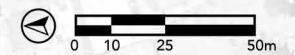
Peace St.

Royal Canadian Legion

Davidson St.

Sheppard St.

CONCEPT FOR DISCUSSION
PURPOSES ONLY





Dog Park Area

Consolidated Recreation

Consolidated Play Areas

Community Gathering Area

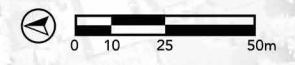
Community Gathering Area

Community Gathering Area

Play Area

Consolidated Recreation

PROGRAMMING





Walking Trail

Beaver River Wetland Trail

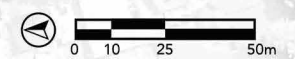
Accessible Walking Path

Emergency Vehicle Access

Maintenance Road

Parking

CIRCULATION





Gateway

Viewshed

Lighting

Formal Park Entrance

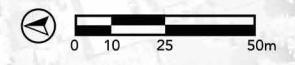
Park Signage

Gateway

Lighting

Park Signage

EXPERIENTIAL DESIGN





PHASE 1 | Year 0 to 4

- Accessible walking paths
- Walking trails
- North park improvements (accessible playground, walking paths, tennis / pickleball courts, benches, parking, picnic shelter)
- Dog park
- Entrance signage at Peace Street and central plaza
- Pump track
- Central picnic pavilion foundation
- Baseball diamond relocation
- Utility extension for future splash pad, washrooms, and lighting
- Parking lot reduction



PHASE 2 | Year 4 to 7

- Baseball diamond lighting
- Multi-purpose sports field
- Updated pedestrian bridge
- Central picnic pavilion
- Tree planting
- Central plaza walkway planting
- Washroom facilities



PHASE 3 | Year 7 to 10

- Pedestrian-scale lighting
- Splash pad
- Bandstand
- Basketball court

PHASING PLAN

CONCEPT DESIGN COMPARISON

Both concepts include:

- North park improvements (accessible playground, walking paths, tennis / pickleball courts, benches, parking, picnic shelter)
- Updated pedestrian bridge
- Basketball court
- Pickleball courts
- Tennis courts
- Splash pad
- Baseball diamonds
- Pump track
- Multi-purpose sports field
- Dog park
- Seating
- Accessible pedestrian pathways with lighting
- Washroom facilities and water fountain
- Planting beds and trees

CONCEPT 1



CONCEPT 2



ENTRANCE GATEWAY	Open plaza	Covered picnic pavilion
BANDSTAND	No	Yes
REVITALIZED PARKING LOT	No	Yes
ACCESSIBLE CENTRAL PICNIC PAVILION	No	Yes
PLANTING BED AREAS	Plazas and trailheads	Plaza walkway



Bandstand at Lake Park, Milwaukee, WI



MBTA Station, Salem, MA



Wade Walker Community Park Pavilion, Atlanta, GA



Dunbar Park, Chicago, IL



Poinsettia Dog Park, Carlsbad, CA



RIM Park Bike Track, Waterloo, ON



Park Signage, Gananoque, ON



Lake Wilcox Park Splash Pad, Richmond Hill, ON

