



MacLEOD PARK

CONCEPT PLAN | 2024



CONCEPT 2

Concept 2 is a cohesive hub-oriented park design that creates distinct zones for passive and active recreation. This concept presents an identifiable entrance that transitions to active recreational facilities.

Notably, this design proposes reduced parking and a repositioned ball diamond to prioritize central open green space for flexible use, passive recreation, and enhanced vistas. Within this central core of the park is an accessible sheltered picnic area, emphasizing a memorable entrance gateway that will serve as a social gathering space for events throughout the year.

Proposed active recreation areas include multi-purpose sports courts, a dog park, playgrounds, a splash pad, and a pump track, encouraging vigorous activity and community engagement for all ages.



Repositioned Baseball Diamond

Existing MacLeod Park Nature Trail

Splash Pad

Existing Baseball Diamonds

Proposed Accessible Walking Trail

Existing Historical Buildings & Haunted Trail Barn

Proposed Dog Park

Proposed Multi-Purpose Sports Field

Existing Skate Park

Proposed Pump Track

Beaver River Wetland Trail

Cameron St.

Emergency Access Route

Existing Playground

Existing Gazebo

Picnic Shelter

Updated Pedestrian Bridge

Existing Washroom Facilities

Revitalized Tennis and Pickleball Courts

Revitalized Accessible Playground

Existing Lawn Bowling Club

Entry Signage

McNabb St.

Trootie St.

Peace St.

Existing Community Centre

Proposed Bandstand

Pedestrian-Scale Walkway Lighting

Royal Canadian Legion

Proposed Basketball Court

Proposed Picnic Pavilion

Proposed Washroom Facilities and Water Fountain

Existing Animal Shelter

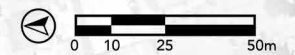
Planting Bed and Entrance Signage

Reduced and Revitalized Parking Lot

Davidson St.

Shepherd St.

CONCEPT FOR DISCUSSION
PURPOSES ONLY





Dog Park Area

Consolidated Recreation

Consolidated Play Areas

Community Gathering Area

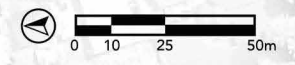
Community Gathering Area

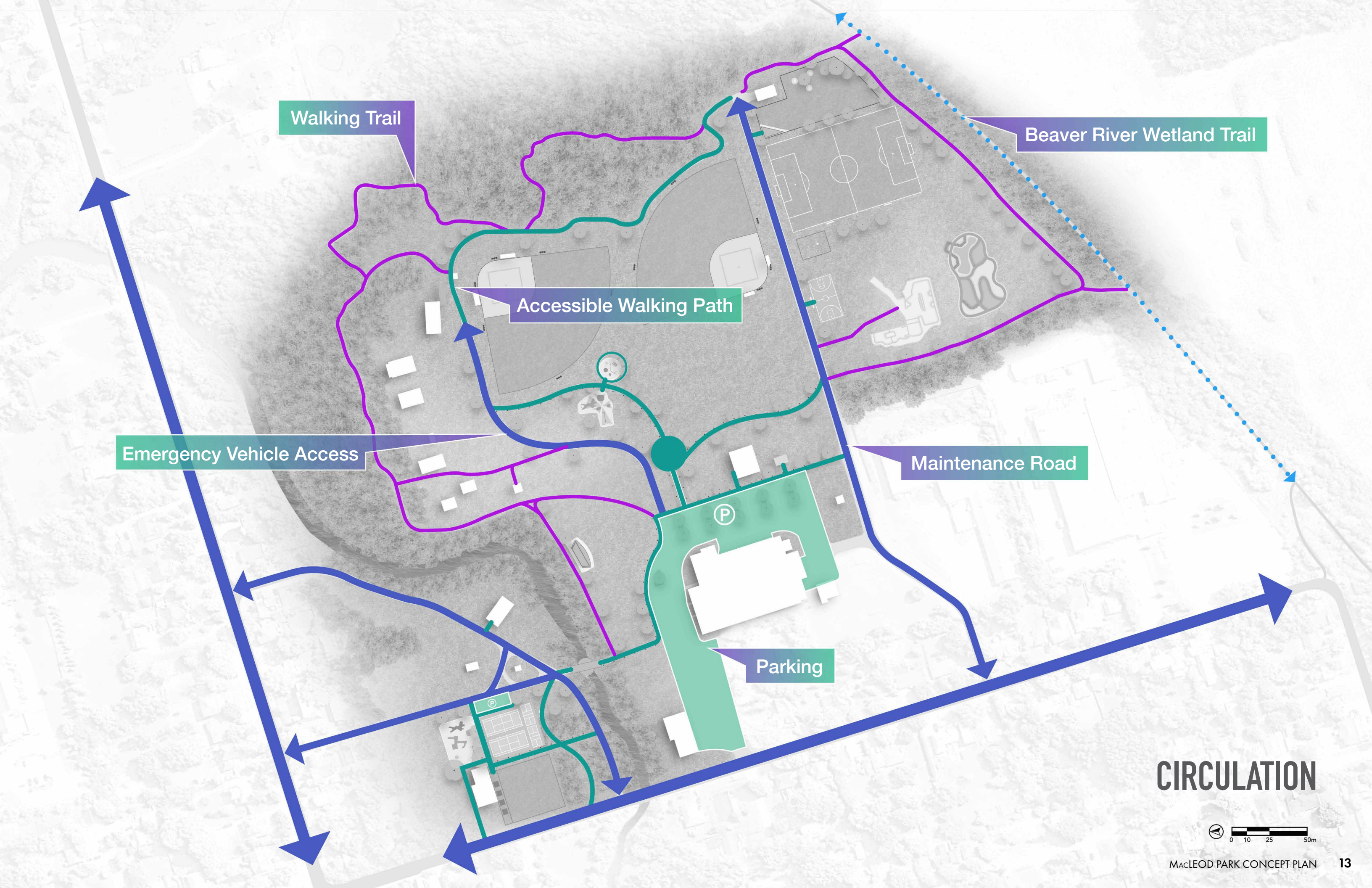
Community Gathering Area

Play Area

Consolidated Recreation

PROGRAMMING





Walking Trail

Beaver River Wetland Trail

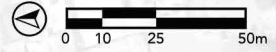
Accessible Walking Path

Emergency Vehicle Access

Maintenance Road

Parking

CIRCULATION





Gateway

Viewshed

Lighting

Formal Park Entrance

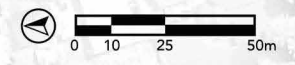
Park Signage

Gateway

Lighting

Park Signage

EXPERIENTIAL DESIGN





PHASE 1 | Year 0 to 4

- Accessible walking paths
- Walking trails
- North park improvements (accessible playground, walking paths, tennis / pickleball courts, benches, parking, picnic shelter)
- Dog park
- Entrance signage at Peace Street and central plaza
- Pump track
- Central picnic pavilion foundation
- Baseball diamond relocation
- Utility extension for future splash pad, washrooms, and lighting
- Parking lot reduction



PHASE 2 | Year 4 to 7

- Baseball diamond lighting
- Multi-purpose sports field
- Updated pedestrian bridge
- Central picnic pavilion
- Tree planting
- Central plaza walkway planting
- Washroom facilities



PHASE 3 | Year 7 to 10

- Pedestrian-scale lighting
- Splash pad
- Bandstand
- Basketball court

PHASING PLAN

CONCEPT DESIGN COMPARISON

Both concepts include:

- North park improvements (accessible playground, walking paths, tennis / pickleball courts, benches, parking, picnic shelter)
- Updated pedestrian bridge
- Basketball court
- Pickleball courts
- Tennis courts
- Splash pad
- Baseball diamonds
- Pump track
- Multi-purpose sports field
- Dog park
- Seating
- Accessible pedestrian pathways with lighting
- Washroom facilities and water fountain
- Planting beds and trees

CONCEPT 1



CONCEPT 2



ENTRANCE GATEWAY	Open plaza	Covered picnic pavilion
BANDSTAND	No	Yes
REVITALIZED PARKING LOT	No	Yes
ACCESSIBLE CENTRAL PICNIC PAVILION	No	Yes
PLANTING BED AREAS	Plazas and trailheads	Plaza walkway



Bandstand at Lake Park, Milwaukee, WI



MBTA Station, Salem, MA



Wade Walker Community Park Pavilion, Atlanta, GA



Dunbar Park, Chicago, IL



Poinsettia Dog Park, Carlsbad, CA



RIM Park Bike Track, Waterloo, ON



Park Signage, Gananoque, ON



Lake Wilcox Park Splash Pad, Richmond Hill, ON